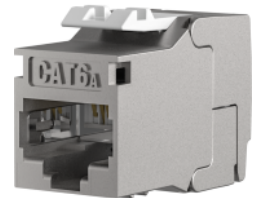
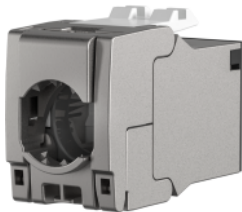
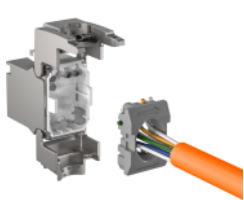
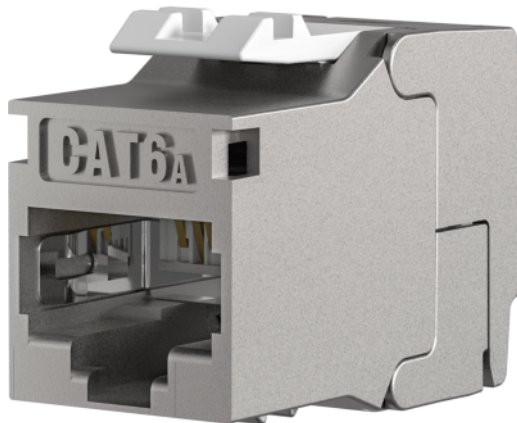


# DATASHEET

## RJ45 Keystone Slimline/Shortbody Cat.6A Component certified silver



### General data

The E-20094 Cat.6A Keystone module combines very high system reserves with a slimline/shortbody housing. The slimline/shortbody housing allows installation in UAE frames and, thanks to the short design, easier installation in underfloor systems and flat data sockets. The high quality standard of the Cat.6A Keystone module ensures very good transmission properties for 10 Gigabit applications, even over a long period of time. Tool-free assembly is very quick and easy; no special tools are required. With the Cat.6A Keystone Module you receive a fully shielded RJ45 module that guarantees long-term and reliable 10 GBit/s Ethernet services in your network installation.

### Features:

- Extremely slim "Slimline" design enables installation in UAE carrier rings, design compatible
- Very short design of only 29, 2mm for easier installation in ducts and flat boxes
- Flexible installation with installation cables or patch cables possible thanks to compact cable pre-sorters for contacting IDC strips AWG27/7..AWG26/7 and AWG24/1..AWG22/1
- Pair management according to TIA/EIA 568 A/B color codes (color code printed on the cable pre-sorter)
- Suitable for all distribution panels, underfloor systems and support rings with Keystone Breakout
- Slidable shield contact adapts to a wide range of cable diameters (5 - 8,5mm)

### Scope of delivery:

This datasheet was created automatically on 19-03-2024 . Technical changes reserved.



# DATASHEET

## RJ45 Keystone Slimline/Shortbody Cat.6A Component certified silver

- 1 x RJ45 module
- 1 x cable pre-sorter for installation cable AWG24/ 1 - 22/1 (white)
- 1 x cable pre-sorter for patch cables AWG27/7..26/7 (gray)
- 1 x dust cap
- 1 x quick guide

### Allgemeine Daten

Type of connector	RJ45 8(8)
AWG-range	27 - 22
Model	jack
Suitable for litz wire conductor	True
Suitable for degree of protection (IP)	IP20
Suitable for solid core	True
Suitable for flat cable	False
Current Rating	1.5 A
Connection type	Insulation displacement connector
Category	6A (TIA)
Max. cable diameter	8.5 mm
Special tool necessary	False
Suitable for round cable	True
For UAE suitable	True
Complaint to UL94	V-0

### Mechanische Eigenschaften

Mating cycles	≥ 750 Mating cycles
Separate earthing flag	True
360° shield contact	True
Dust cover	true
Insertion force	≤ 30 N
Housing material	Zinc die cast
Contact coating	50 μ"

### Umgebungsbedingungen

Temperature range	-40 – 66 °C
-------------------	-------------

### Elektrische Eigenschaften



# DATASHEET

## RJ45 Keystone Slimline/Shortbody Cat.6A Component certified silver

Insulation Resistance	$\geq 500 \text{ M}\Omega$
Contact Resistance	$\leq 20 \text{ m}\Omega$
Dielectric Withstanding Voltage	1000 V DC
screened	True
4PPOE certified	True

### Available variants

ArtNr.	Bezeichnung	Colour
E-20094	RJ45 Keystone Slimline/Shortbody Cat.6A Component certified silver	silver

### Drawings

